

TheShrimper

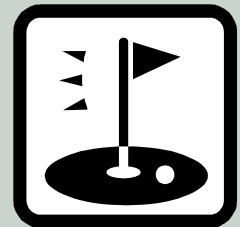
THE NEWSLETTER FOR MID KENT GC MEMBERS

February
2011

TEAMCAPTAINS ANNOUNCED

MKGC have announced their Mens' and Ladies' Team Captains for the 2011 Summer Season.

In the Kent Golf Leagues, the A Team Captain is Ian Finnegan and the B Team Captain, Sean Ewen. The challenge - to better last year's performance is on - last year we came second in both leagues to Sittingbourne. Ian & Sean are up for the challenge!!



There's still time to join the MKGC Pin High Club!

A one-off annual payment of £20 enters you in 12 monthly draws! On payment of your £20, you will be allocated a random Pin High Club number, which is entered in each draw. You may buy & hold more than one number.

But you must enter before the 31st March 2011 - entries after this date will not be accepted.

From April 2011 there will be 11 monthly draw prizes of – 1st £60 2nd £50 3rd £40 4th £20 with 'bumper' prizes in the 12th draw of: 1st £400 2nd £200 3rd £200 4th £100 5th £100 6th £50 7th £50 8th £30

How to join? Easy – put your money in an envelope marked Pin High Club, **CLEARLY PRINTING** on it your first name, surname, telephone number and email address so that we can contact you should you win!!

Then give your envelope to the office or a member of the Social Committee.

The fund surplus (income less prizes) will be used to provide extra social events for members. Full details on the social notice board or www.mkgc.co.uk



John Budd - Captain
Perman Shield Team

As defending Champions, Mid Kent have got something to live up to in 2011.

The Shield - hanging proudly in the Lounge - should act both as a reminder and motivator!



Mick Browning - Captain
Sundridge Park Trophy Team

MKGC were last year's winner of the Trophy, Mick takes on the captaincy of this team of single figure golfers with the first round against Cherry Lodge at home.



Barry Plumb - Captain
West Kent Trophy Team

The third of the trophies Mid Kent won last year, a result 'Captain Again Baz' seeks to repeat. First round drawn away to Shooters Hill.

The Association of South Eastern Golf Clubs founded in 1925 consists now of no more than 16 golf clubs in the northern area of Kent, each of whom must be affiliated to the Kent County Golf Union. Mid Kent joined the Association in 1990.

Each club is entitled to enter one team into each of the six knock-out competitions run by the Association.

One of these is a scratch competition - the Perman Shield - with matches consisting of four foursome matches and eight singles played during a single day, foursomes in the morning, singles in the afternoon.

There are now 5 competitions run by the Association where participation is restricted to players with a handicap not lower than a pre-set limit. Matches are played on a level basis, with no concession to individual's handicap.

The five handicap competitions are - Sundridge Park Trophy (6 and over)

Wilding Cole Trophy (9 and over)

West Kent Cup (12 and over)

Royal Blackheath Trophy (15 & over)

Gray Trophy (19 and over)

Matches are played on a knockout basis and consist of eight singles.

One point is awarded for winning an individual match and half a point is awarded to each team in a match finishing all square.

In the event of a match finishing all square at 4 points each the tie shall be awarded to the "Away" team

Matches must be played by :

First round by 27 May

Second round by 24 June

Semi-finals by 29 July

Finals by 9 September



Brian Peirce

Captain
Wilding Cole Trophy Team

Brian's team get off to a tough start with an away fixture against last year's Trophy winners, Knole Park



Brian Weston

Captain
Royal Blackheath Trophy Team

This team start their season with an away fixture at West Kent in the lower half of the draw where they will miss last year's winner & runner up, Lamberhurst and Blackheath, until the final.



Alec Anderson and Pat Quadling

Joint Captains
Gray Trophy Team

This canny pairing should give Langley Park a run for their money in Round 1

2011 Club Competitions Get Underway at last!

The last few weeks have seen the Club getting back into the swing of things and managing to get some competitions played after the recent appalling weather conditions.

First up was the delayed January Medal, which was played over two days and for that reason was a non-qualifier for handicap purposes. The winner overall was MICK BROWNING who decimated the field with a fantastic 40 points! That won him the Gold Division, with Stuart Hornby taking the Silver Division and Terry Christofis the Bronze.

Next up was the Midweek Medal which was won with yet another splendid score of 40 points, by the man in form, Tony Lovell.

The weekend, 05/06 February saw the February Medal played under the new format of two SEPARATE competitions. One competition on Saturday and one on Sunday, which meant that by doing it this way, we could make them both handicap qualifying under CONGU regulations.

Saturday's winners were:

Gold: Roger Marshall 38 points, Silver: Danny Underwood 38 points, Bronze: Tony Byers 37 points; all of which were great scores, as it was blowing an absolute "hooley" out there on the day! Even 'Windy' Miller said it was so bad, he wasn't going out!

Sunday was marginally better but still breezy and tricky, and again scoring was tough. The eventual winners were Gold: Paul Watkins 36 points, Silver: Don Pascoe 36 points, and Bronze: Mick Horner 37 points. Well done to all winners, many of whom won on countback.

It was nice to get some proper golf in after all the recent bleak weather.



Bruce Galbraith -
 Captain
 Kent County Foursomes
 Team

Two 'pairs' from clubs in the county are drawn to play match play four-somes off scratch against two pairs from another Kent club. Scores of the two pairs are added together to determine the round winners. Different players can be used in each round.



Brid McInerney
 Captain
 The Bradley Cook
 5-a-side team
 scratch matchplay
 competition

Brid takes over in 2011 from Shirley Preston, 'a tough act to follow' Brid says but she is looking forward to the challenge. Brid has been a member of the Bradley Cook squad for 21 years.

In the first round in 2011, Mid Kent have a Bye.

2011 Competitions Get Underway at last!

(article continued from Page 3)

On Monday 21 February it was the Midweek Medal, in which Juniors are eligible to play in as long as they have a handicap of 28 and under, and there was some very fine scoring indeed .

Lee Collins set the pace with a very good score of 40 points, although it only got him third place.

Next to post a potential winning score was the man in form so far this year, Mick Browning. He scored an excellent 41 points and must have spent the afternoon penning his winners speech as it looked like being the winning score.

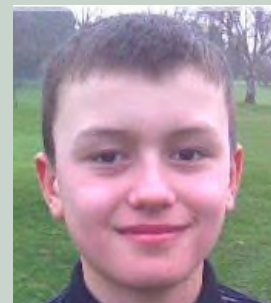
However he hadn't reckoned with young Harry Knight, with his new secret weapon... one of the ex-demo TaylorMade R9 drivers that the Pro Shop had on special offer. It was Harry's first game with it since buying it and boy did it work! He posted an amazing 45 points to soar to the top of the leaderboard - the eventual winning score.

The next day was the Junior Medal, and although Harry couldn't keep up the fireworks there were many other excellent scores to be seen. Sam Malait and Louis Savill got 38 points to finish joint 3rd, then Jack Rasor looked like he had won it with a great score of 40 points. However, one of our youngest members Oliver Lewis-Perkins came flying through the field with a fantastic total of 45 points to win.

Congratulations "Ollie" on your great result, the first of many victories for you we all hope.

And well done to so many juniors for taking part in the event as we had the biggest field for a medal for years.

All in all, the future of the club looks very bright with all our talented juniors, expertly looked after by Junior Organizer, Mr Peter Lake.



Harry Clark, pleased with his new driver!



Shirley Preston Steps Down As Bradley Cook Captain

After 16 years Shirley Preston has decided to retire as Captain of the Bradley Cook Team.

The Bradley Cook Cup is a 5-a-side team knock-out Tournament played off scratch. Played in handicap order, home and away in all rounds up to the final, which is played at a neutral venue. First round losers are automatically entered into the Parallel Plate.

In her years of Captaincy Shirley has led her team to victory in the Cup in 1995; they were also runners up in 2004, 2005 and 2009 and runners up in the Plate in 2007.

Shirley said that whilst she had enjoyed her many years as Captain she felt it was time for new blood and a new Captain.

At last week's Ladies Supper, on behalf of all ladies Lady Captain Beverley Barrow thanked Shirley for her dedication to the team over the years and presented her with Millbrook vouchers - which will come in useful now that Shirley should have more free time for her second passion, gardening. Shirley said it had been an honour to Captain the team over the years and wished the team every success in the future.



Pearson Trophy - Mid Kent come second, losing out to Littlestone

Janice 'Scoop' Bourne, Captain of the Mid Kent Pearson Trophy team finished off her winter 'job' of posting match reports in style.

Obviously trying to attract the Board's attention with her stylish headlines and be recruited to take over as Shimper Editor, the experience of playing Bexleyheath twice in the last month has inspired headlines from Janice of 'A great Day Out at Dodge City' (those of you who have played Bexleyheath will know what Janice means!!) and 'What could have been' (or We were just pipped at the post by Littlestone!!).

There was one final chance in February to move up the scoreboard within our Group from joint second to first place. A beautiful sunny day with very little wind – the advantage was surely on Mid Kent's side with a keenly anticipated win against Bexleyheath.

The first two matches were won very convincingly by Lyn Ager and Wendy Knight who stormed home with a 5&4 and 4&2 win to Mid Kent. Chris Waghorne kept nipping at the heels of her opponent with her match finally ending on the 19th, but sadly as a loss. Carole Sulsh and Beverley Barrow pushed home their wins with 2up and 3&2 gains respectively. All now square on the final tee for our last two single matches. Sati Padda and Sue James both battled bravely but lost on the 18th .

Win to Mid Kent 4 & 3

It all now rested on the last two matches to be played at Littlestone. Littlestone vs. Bexleyheath and Broke Hill. If the wind kept at bay, then Littlestone wouldn't walk away as winners of this Group – if it blows, then all of us were sunk!!

Sad to say, Littlestone beat Broke Hill 6 & 1 to end the season 1st , Mid Kent 2nd within our group. Although tied with Bexleyheath for the number of games we both won, we were ahead on points.

Better luck next season!!



Forum Thursday 3rd February 2011

The 2011 Forum was attended by around 50 members who listened to detailed presentations on Mid Kent's continuing investment in course & house and had the opportunity to put a range of related questions to Course Manager Lee Sayers and Chairman of House Danny Stevenson. More general questions were fielded by other Directors present at the Forum.

Lee Sayers outlined works completed in the last 12 months -

- 12th fairway bunker made more visible/ more of a hazard
- 3rd green surrounds reshaped to improve play
- 18th tee realigned to avoid damage to adjoining properties
- 15th tee enlarged - more tee positions/avoid excessive wear
- 9th tee re-levelled as back dropped away
- Pathway improvements
- Deal with areas of excessive wear, eg approach to 14th tee where grass growing is an issue

On going projects include -

- 13th left & right hand bunkers re-shaping. Left hand split into two bunkers. (Stop Press! Work now complete.)
- Trees removed or thinned for better growth of adjoining trees or allowing light to worn areas in play, eg back of 13th

Projects which have not yet been started include -

- Bunkers to the 10th & 18th greens
- The area around the 1st tee - excessive wear/unsightly

In terms of ongoing activities, Lee stressed the need for -

- Aeration - No1 task to ensure healthy turf, particularly after the lying snow causing mould in the under surface humidity
- Attention to drainage - a very wet January/February

Capital investment in our course



Sweep-N-Fill

Fills aerified holes and cleans turf surface of aerified greens. Performs complete brushing of top dressing sand from total filling of holes to a mowing-ready surface.



Toro 5510 fairway Mower - 35.5 hp, 4-Cylinder Kubota Diesel Engine gives impressive quality of cut and exceptional after cut appearance



Toro 3250D Greens Mower - large, 3 cylinder, Briggs & Stratton 21 hp diesel engine provides exceptional performance required for greens and all surrounding areas.



Danny Stevenson, Director of House, then presented to the Forum the Board's recent actions to identify & eliminate waste and examine overheads to see that MKGC is getting value for money.

Danny presented a subject many of us would find tedious in a logical, clear and absorbing fashion. In summary he dealt with identifying cost savings and achieving more efficient operation of the Club whilst improving its general ambience -

- Gas supply - by replacing the main boiler, removing redundant pipework & heaters and upgrading pipe runs, we have improved efficiency, lowered maintenance charges and saved energy costs
- Savings in electricity has been achieved by installing low energy bulbs, putting floodlights on timers and installing automatic motion switching to changing rooms
- Re-negotiating service contracts - laundry, catering equipment hire & cleaning - to improve service & reduce costs
- Bar - efficient use of staff, reducing suppliers' prices, better stock control and cost savings on pipe cleaning
- Creating new storage shed for more efficient setting up of functions and better visual of Club foyer
- Improved hygiene and storage to the kitchen area by re-furbishing cold rooms, repairing refrigeration, new work surfaces and degreasing/painting walls & ceiling
- New disabled facilities we can be proud of.
- Complete makeover of lounge - redecorated, new carpet, furniture and curtains - to improve facilities for social activities and a relaxing experience for Members
- Improved security - entry fobs, clearer cameras installed, bar & office access control stations. Improves insurance
- Complete re-organisation of trolley shed under office control to provide allocated space policy and removal of junked/abandoned equipment



And yet another competition gets underway - the biggest Club competition in the world!

To date over 200,000 golfers have taken part in the Mail on Sunday Golf Club Classic with over 3,000 clubs entering each year.

The men's team are through to the 3rd round of the 2011 Mail on Sunday competition.

The first round was played at home against Fawkham Valley on the 26th January. The Mid Kent team comprising of Steve Barrow, Peter Lake, Barry Plumb, Ricky Cartwright and John Budd won 4 matches to 1.

The second round was also played at home against Redlibbets and with only one change to the team, Paul Church replacing John Budd, Mid Kent won 3 ½ games to 1 ½

The draw will be made soon to see who we play in the third round!

Junior Club Supper

Friday 18th March 2011

6:00 for 6:30pm

Please sign up as soon as possible - there's a notice on the Junior Notice Board in the Lobby

Prizewinners at the Ladies Supper

Kerr Salver – this is usually presented at the AGM, but unfortunately the winner was not available. It is presented to the lady with the 6 best scratch medal scores and last year was won by Kirsty Galbraith.

CHANDLER BROOCH - presented to the lady member who reduced her handicap by the greatest margin last year. Winner who came down from 16 to 11 was Chloe Galbraith - making Mum at a hcp of 13 the highest handicapper in the Galbraith home!!

LGU Pendant - this was linked to the September medal and won by Marilyn Brown with a net 72

LWGA MEDAL - presented to the Lady with the 4 best net medal score during the period 1st January to 31st December 2010. The winner, Kirsty Galbraith, goes through to the regional heat.

MORGAN MORGAN - Ladies Winter knockout competition. Winner Annette Fraser

PAR TROPHY - Winner on a countback - Sheila Glass

MOLLY COPUS SALVER - the Molly Copus Salver is a “Champions of Champions” Cup – winners or runners-up of a major cup or trophy in the last 3 years qualify. Winner Kirsty Galbraith net 69



Winners (top row left to right) - Kerr Salver & EWGA Medal Kirsty Galbraith, Chandler Brooch Chloe Galbraith, LGU Pendant Marilyn Brown

Winners (bottom row left to right) - Morgan Morgan Annette Fraser, Par Trophy Sheila Glass, Molly Copus Salver Kirsty Galbraith

Problematic



Pop Quiz

Saturday 26th March 2011

7:30pm for 8:00pm

Teams of 6 - £3.00 per person

Quiz format on Social Noticeboard

Professionally run for Canterbury Oast Trust

Saturday 26th March – Music Quiz – 7.30pm for 8pm

Something new for Mid Kent – music questions covering range of years, films, TV. Teams of 6. £3 per person to enter to include sandwiches in the interval.

Saturday 9th April – Cabaret Night – 7.30pm for 8pm

£15 per person – tickets on sale 8pm Friday 4th March

To include 3 great acts, singer, comedian and Elton John tribute. Food extra and available before the show.

Cabaret Evening- Saturday 09 April - only £15, 3 great acts!



Lee Weller - Singer
8:00pm & 11:15 to midnight
TV, cabaret seasons in
Marbella & Corfu

Billy Hunter - 9:00pm
Refreshing New Comedian
Known as the 'Coffin' Man

Elton Tribute - Top Act!
10:15 - 11:15pm

Tickets £15
On sale
Fri 4 March
8:00pm

Supper
Available



Easter Bingo

Back by popular demand it's eyes down for Easter Bingo - Wednesday 26th April 7:30 for 8:00pm.

Friday 29th April – Indoor Street Party For the Royal Wedding – Free Entry

Come along in your red, white and blue to celebrate the marriage of Kate and Will!!! Bunting, banners, flags, large screen TV, seafood stall, face painter, children's entertainer and back by popular demand Nic Slade and his multi-tribute cabaret show




MID KENT GC
02 July 2011
OUTDOOR TRIBUTE CONCERT

Beatles & Madness
Supporting Act - Fat Brando

Tickets on sale in Club - 1:00-3:00pm - 5th/14th/16th/22nd April
Purchased - before 31 May - Adult £18 * Family of 4 £55
Purchased - from 31 May - Adult £23 * Family of 4 £60
Family = 2 adults & 2 children under16

Saturday 2nd July – Outdoor Tribute Concert

After the success of the previous two years the outdoor tribute concert returns – this year featuring tribute bands Madness and Beatles supported by Fat Brando. Tickets are £18 per adult and £55 per family if purchased before 31st May and £23 per adult or £60 per family if purchased after 31st May. Family comprises two adults and two children aged 16 or under.

Tickets on sale in the clubhouse between 1300hrs and 1500hrs on the 5th, 14th, 16th and 22nd April.

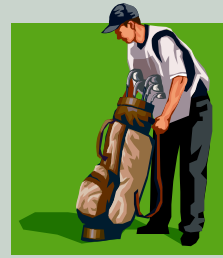
Dingbats

With thanks to John O'Toole - answers next month

Dingbats are visual word puzzles from which a well known phrase or saying has to be identified. They are derived from the board game that was devised by Paul Sellars. Although similar in concept to the puzzles that were used in TV's "Catchphrase", dingbats generally rely on text rather than pictures, the picture style being more correctly known as a "REBUS". The principle is however just the same, or as Roy Walker (former presenter of 'Catchphrase' would have said, "Just Say What You See!!!"

C O D LO HL MON	TOUCH EARTH	CAR JACK TON
123GO X	0 0	XMASCARA
BAN ANA	KNEE LAMP TORCH FLASH	
4 123 5678910	johnag	ei E ^{gh} i HT ^t gh g

Dingbats.....
find the saying!



Ten of the best Caddie remarks

1. Golfer: "Think I'm going to drown myself in the lake."

Caddy: "Think you can keep your head down that long?"

2. Golfer: "I'd move heaven and earth to break 100 on this course."

Caddy: "Try heaven, you've already moved most of the earth."

3. Golfer: "Do you think my game is improving?"

Caddy: "Yes, you miss the ball much closer now."

4. Golfer: "Do you think I can get there with a 5 iron?"

Caddy: "Eventually."

5. Golfer: "You've got to be the worst caddy in the world."

Caddy: "I don't think so, that would be too much of a coincidence."

6. Golfer: "Please stop checking your watch all the time. It's too much of a distraction."

Caddy: "It's not a watch - it's a compass."

7. Golfer: "How do you like my game?"

Caddy: "Very good, but personally, I prefer golf."

8. Golfer: "Do you think it's a sin to play on Sunday?"

Caddy: "The way you play, it's a sin on any day."

9. Golfer: "This is the worst course I've ever played on."

Caddy: "This isn't the golf course. We left that an hour ago."

10. Golfer: "That can't be my ball, it's too old."

Caddy: "It's been a long time since we teed off, sir."